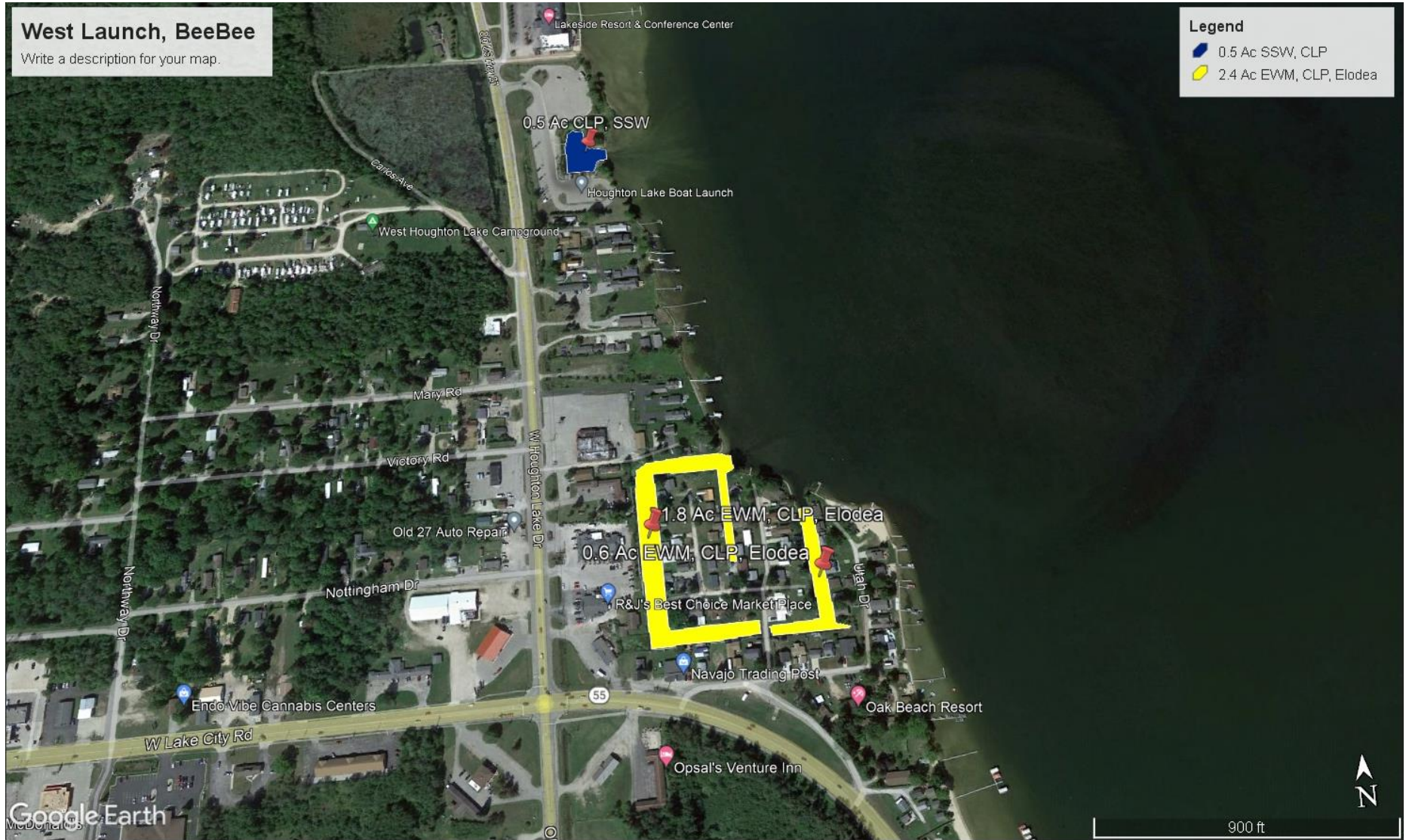


2024 Canal Maps

Treatment Schedule is May 21 and May 22

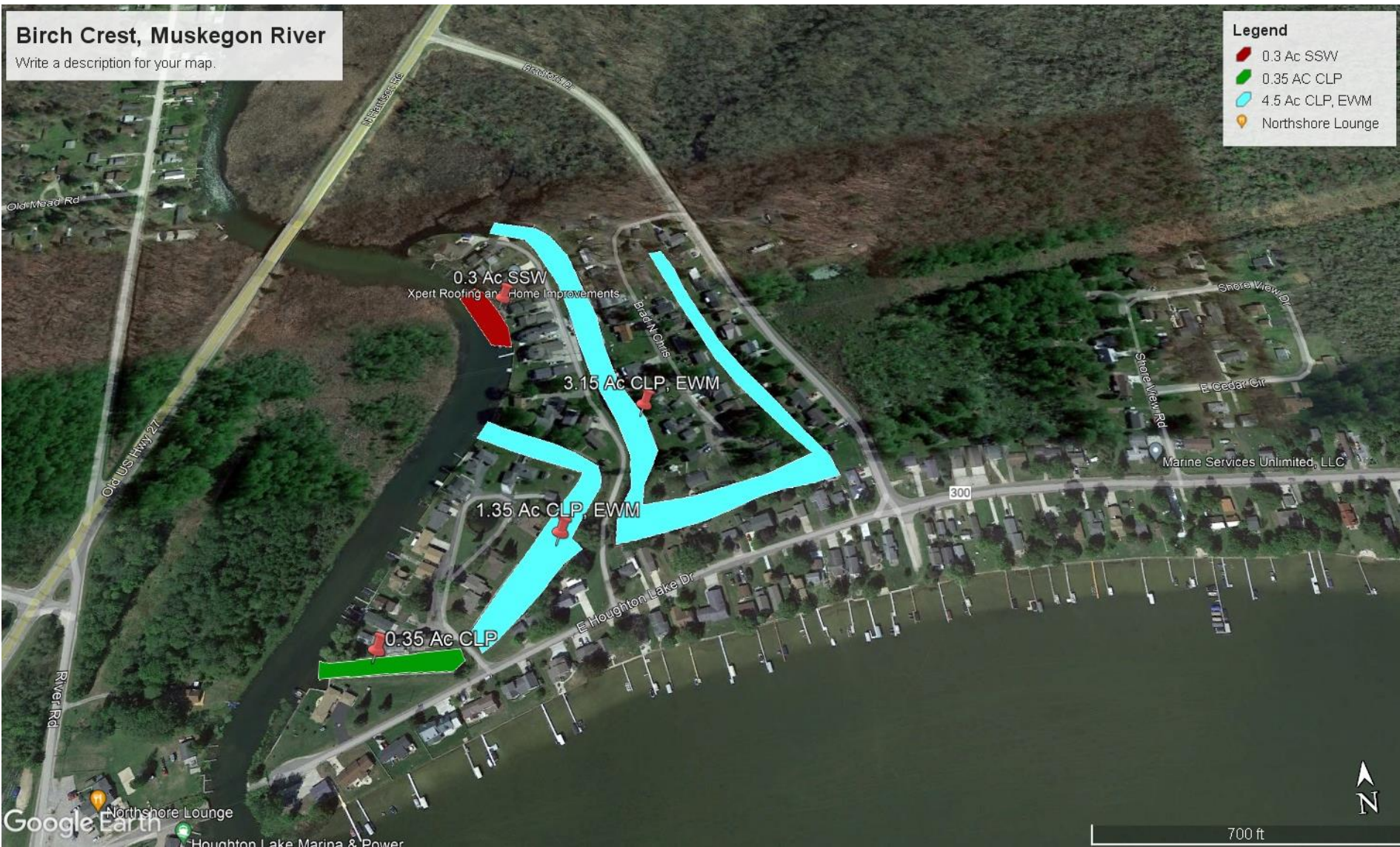


Birch Crest, Muskegon River

Write a description for your map.

Legend

- 0.3 Ac SSW
- 0.35 AC CLP
- 4.5 Ac CLP, EWM
- Northshore Lounge



Chippewa Channel

Write a description for your map.

Legend
7.1 Total Ac CLP



Google Earth

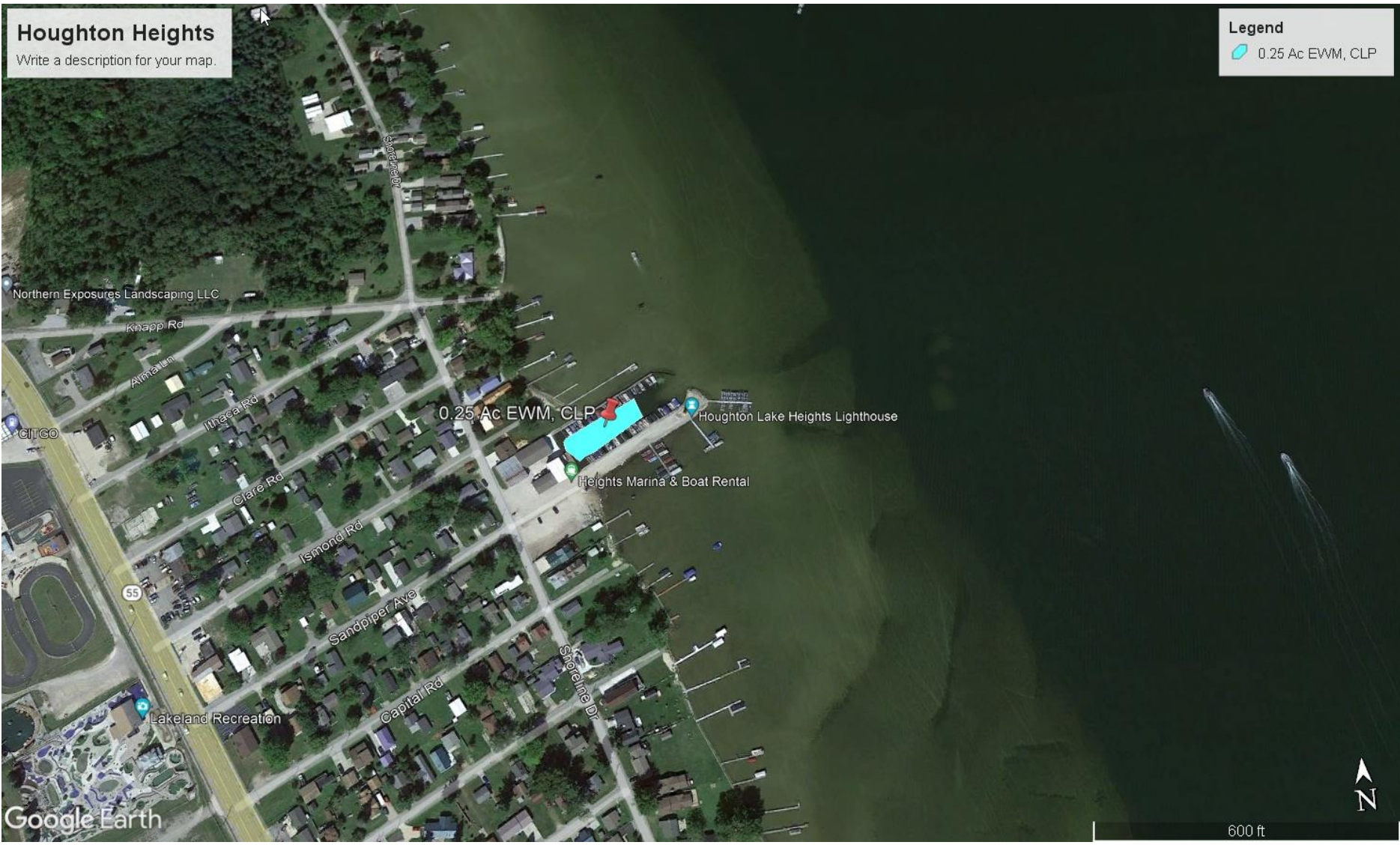
Image © 2024 Airbus

900 ft

Houghton Heights

Write a description for your map.

Legend
0.25 Ac EWM, CLP



Long Point

Write a description for your map.

Legend

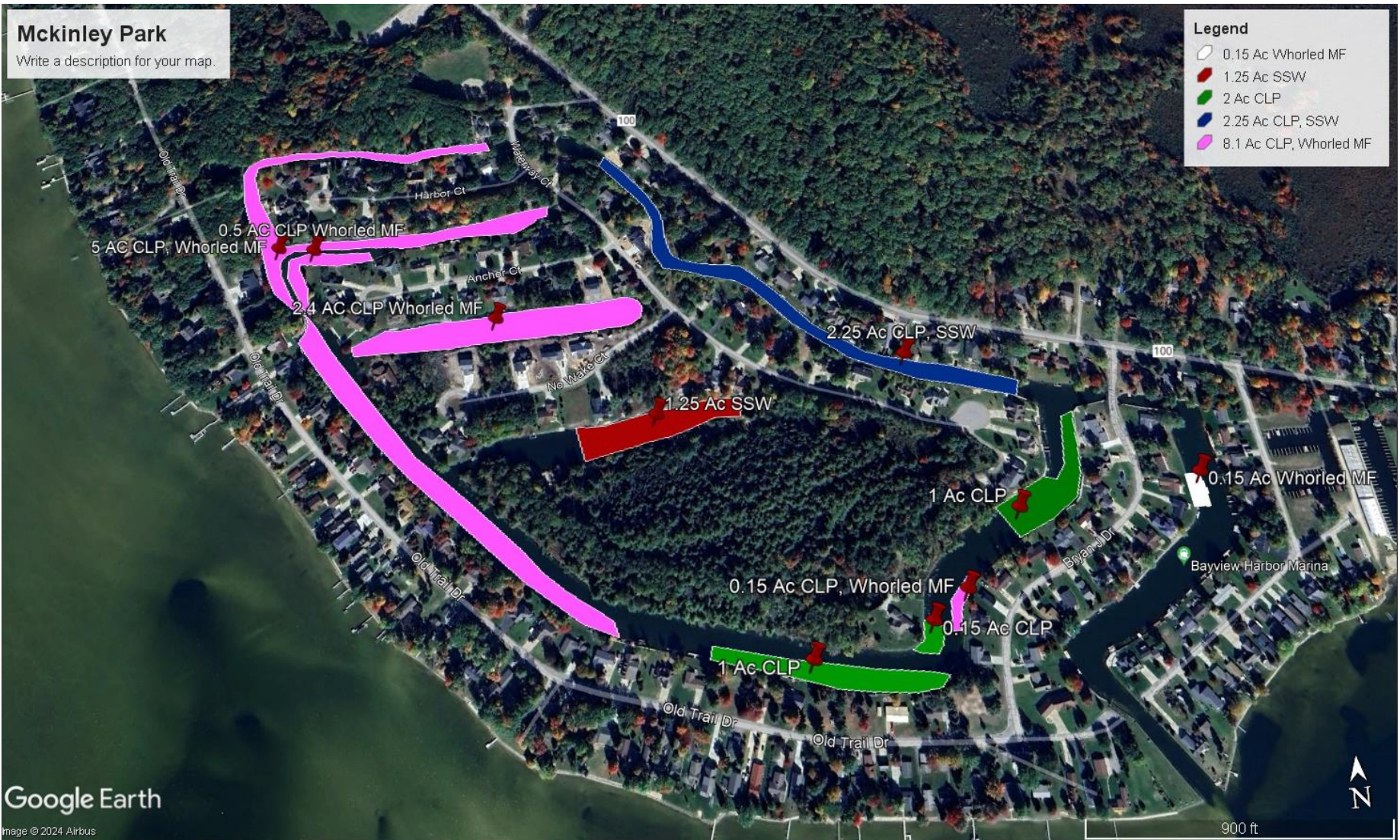
- 0.15 Ac SSW
- 4.75 Ac CLP, EWM



Mckinley Park

Write a description for your map.

- Legend**
- 0.15 Ac Whorled MF
 - 1.25 Ac SSW
 - 2 Ac CLP
 - 2.25 Ac CLP, SSW
 - 8.1 Ac CLP, Whorled MF

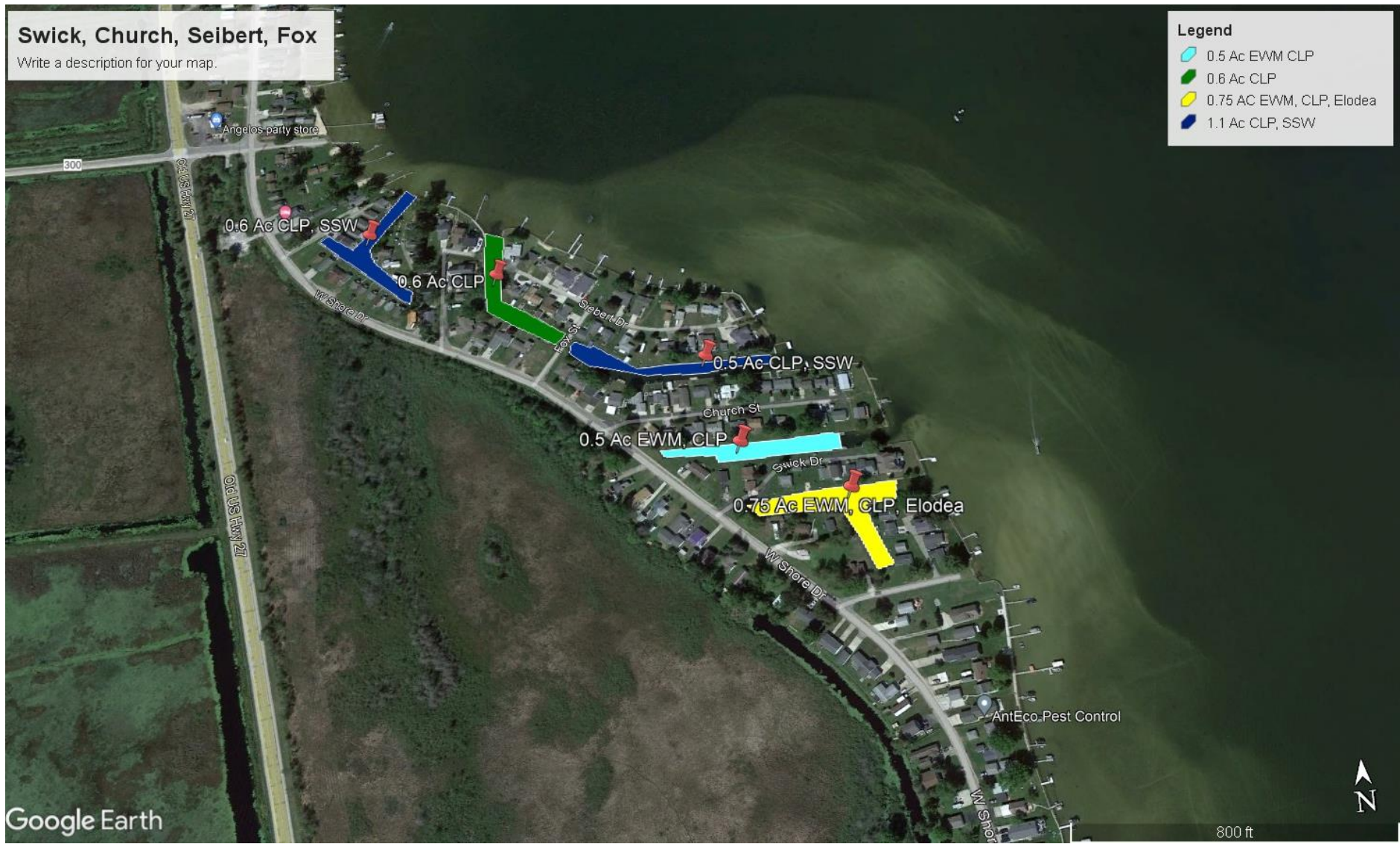


Swick, Church, Seibert, Fox

Write a description for your map.

Legend

- 0.5 Ac EWM CLP
- 0.6 Ac CLP
- 0.75 AC EWM, CLP, Elodea
- 1.1 Ac CLP, SSW



Google Earth

Tower Road Fishing Dock

Write a description for your map.

Legend
0.65 Ac CLP

